

Product data sheet

Connectors for medical applications

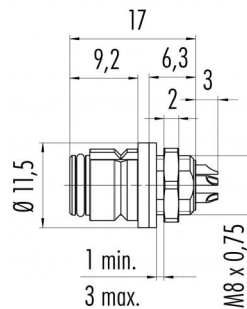


| | |
|---------------------|---|
| Product description | Snap-In IP67 (subminiature) female panel mount connector, Contacts: 8, shielding is not possible, solder, IP67 |
| Area | Snap-In IP67 (subminiature) series 620 |
| Order number | 99 9228 070 08 |

Illustration



Scale drawing



Contact arrangement (Plug-in side)

| | X | Y |
|---|-------|-------|
| 1 | -0,96 | -1,98 |
| 2 | -2,15 | -0,49 |
| 3 | -1,72 | 1,37 |
| 4 | 0,00 | 2,20 |
| 5 | 1,72 | 1,37 |
| 6 | 2,15 | -0,49 |
| 7 | 0,96 | -1,98 |
| 8 | 0,00 | 0,00 |

You can find the component part drawing and assembly instructions on the next page.

Technical data

General values

| | |
|--------------------------|------------------------------|
| Connector design | female panel mount connector |
| Connector locking system | snap |
| Termination | solder |
| Wire gauge (mm) | max. 0.25 mm ² |
| Wire gauge (AWG) | max. 24 |
| Upper limit temperature | 85 °C |
| Lower limit temperature | - 25 °C |
| Customs tariff number | 85369010 |
| Packaging Unit | 100,000 |

Electrical values

| | |
|---------------------------|---------------------------|
| Rated current (40 °C) | 1 A |
| Rated voltage | 63 V |
| Rated impulse voltage | 800 V |
| Pollution degree | 2 |
| Overvoltage category | II |
| Insulating material group | II |
| Insulation resistance | ≥ 10 ¹⁰ Ω |
| EMC compliance | shielding is not possible |
| Degree of protection | IP67 |
| Mechanical operation | > 500 Mating cycles |

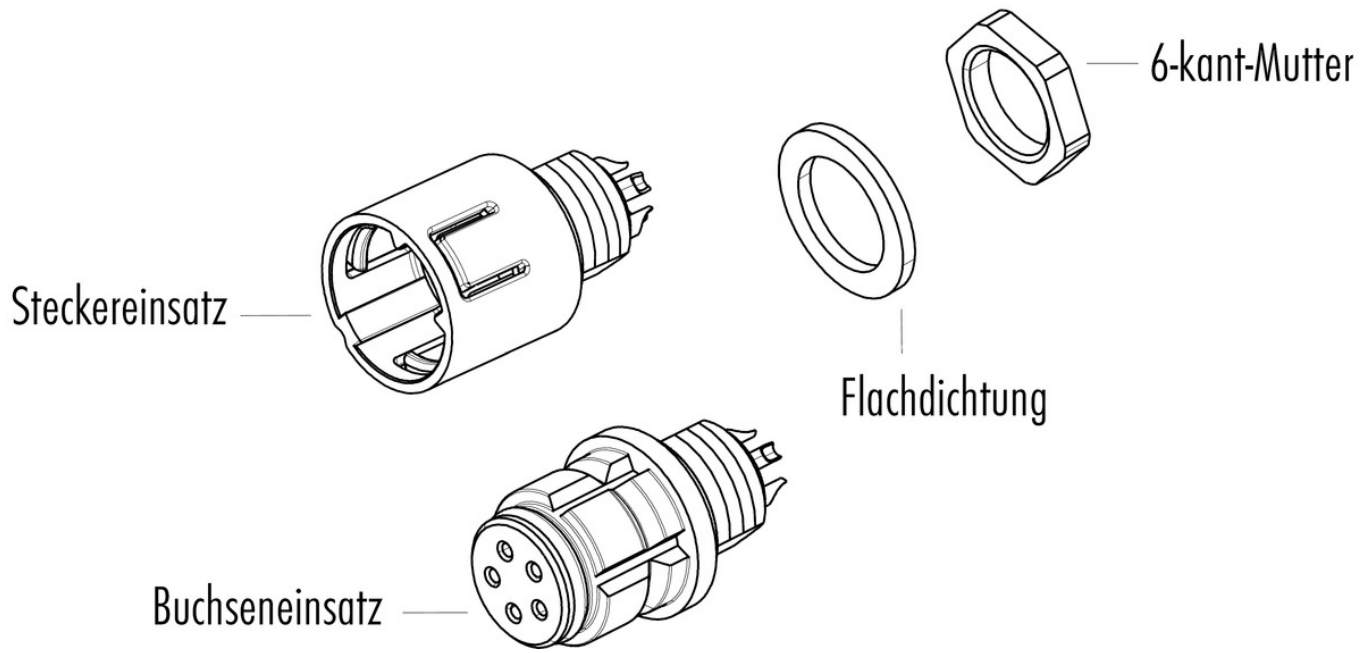
Material

| | |
|-----------------------|---------------|
| Contact material | CuSn (bronze) |
| Contact plating | Au (gold) |
| Contact body material | PA (UL94 HB) |
| Housing material | PA |

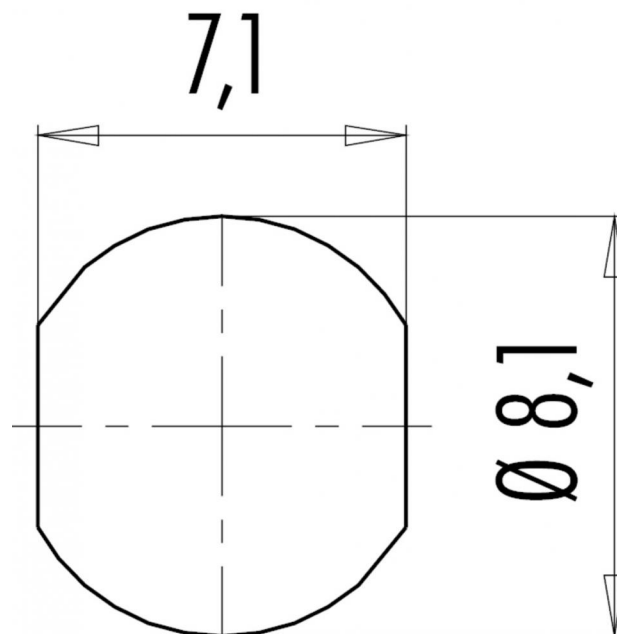
Product description **Snap-In IP67 (subminiature) female panel mount connector, Contacts: 8, shielding is not possible, solder, IP67**

Area **Snap-In IP67 (subminiature) series 620**
Order number **99 9228 070 08**

Component part drawing



Assembly instructions / Panel cut-out



| | |
|---------------------|---|
| Product description | Snap-In IP67 (subminiature) female panel mount connector, Contacts: 8, shielding is not possible, solder, IP67 |
| Area | Snap-In IP67 (subminiature) series 620 |
| Order number | 99 9228 070 08 |

Security notices

The connectors are designed for use in plant, control system and electrical equipment. The end user is responsible for checking whether the connectors are suitable for use in other applications.

Connectors with degree of protection IP 67 and IP 68 are not suitable for use under water. When used outdoors, the connectors must be separately protected against corrosion. For further information about IP degrees of protection refer to 'Technical support' in the Download Centre.